

LandHeath Institute Newsletter, Vol. 5



Eastern Tiger Swallowtail (*Papilio glaucus linnaeus*)
Photo: Taisia Osipova

LandHeath Native Plant Nursery

We are continuing to grow and sell from our nursery at 4862 Parkside Avenue. Please call (267) 275-5750 to make an appointment to browse or pick up, and visit [us online](#) to find plants in season and which native plants could be the right choice for you! Stay tuned for LandHeath participation in farmers' and other outdoor markets in Philadelphia, most recently in southwest Philadelphia (58th and Chester Streets) and in Germantown.



Scott Quitel meeting with PWS Stewards
Photo: Samantha Fong



Joe Pye Weed (*Eupatorium fistulosum*) at the LandHeath Nursery

Philadelphia Watershed Stewardship (PWS) Program

We are in Month 3 of our Philadelphia Watershed Stewardship program! Since our July Newsletter, stewards had the (socially distanced) opportunity to meet one another for the first time at our Native Plant Nursery; inform the future of science teaching in the School District of Philadelphia by participating in the [Urban Teacher Apprenticeship Program \(UTAP\)](#) at the University of Pennsylvania; and kayak with LandHeath's [RiverWays](#) partner [Glen Foerd](#). PWS is a unique field-based 'at the source' environmental learning and leadership experience for high school students in Philadelphia. Contact us at info@landheathinstitute.org if you're interested in observing a session and/or if you are or know a high school student interested in participating.



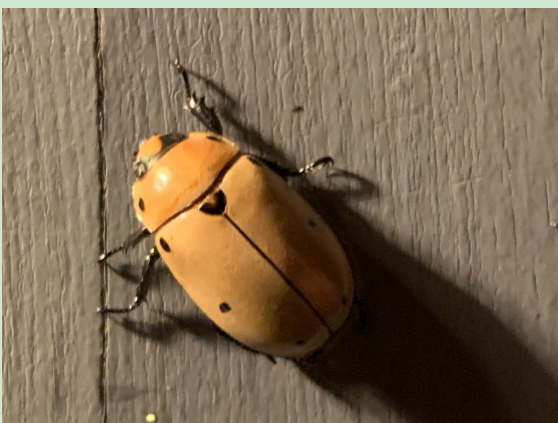
Kayaking on the Delaware River at [Glen Foerd](#) with PWS. Photo: Scott Quitel



Glen Foerd Estate, House and Grounds Tour
with PWS Stewards
Photo: Taisia Osipova

PWS and the Poquessing

On August 20, LandHealth hosted PWS stewards at the historic [Glen Foerd Estate](#) for class with UTAP apprentices, followed by a tour of the house and grounds, and kayak.



Grapevine Beetle (*Pelidnota punctata*)
Photo: Scott Quitel

LandHealth featured in Drexel Now, Drexel's Official Magazine

LandHealth's work with the Drexel co-op program and its six co-op students is featured in this month's Drexel Now written by Beth Ann Downey, [here](#).

Partnership with CDRW

LandHealth is now a member of the Coalition for the [Delaware River Watershed \(CDRW\)](#), a group which brings together nongovernmental organizations working throughout the Delaware River Watershed to share information, leverage resources, and coordinate efforts and advocacy. Together, we are committed to protecting and restoring the Delaware River, its tributaries, and more than 13,500 square miles of forests, wetlands, communities, and other distinctive landscapes in the watershed so that clean water and valued resources are secured for generations to come.



Kayaking on the Delaware
Photos: Scott Quitel

Become a LandHealth Member-Coming SOON!

Launching in September, with several exciting custom-designed membership tiers to choose from!

LandHealth's Native Plant Nursery is Getting Ready for Fall... and Spring 2021!

by Steve Jones, Nursery Manager



Dekay's / brown snake (*Storeria dekayi*)
Photo: Scott Quitel



Common sneezeweed (*Helenium autumnale*) Photo: Steve Jones



jumpseed (*Persicaria virginiana*)

Despite the hot end-of-summer days we are still experiencing, our nursery operation is shifting in anticipation of the coming fall, and making preparations to get a jump on next spring's growing season.

Some of the plants in our native line-up have adapted their flowering time specifically to late summer and fall, using their timing as an advantage in competing for insect pollinators.

Common sneezeweed (*Helenium autumnale*) is starting to put on a show of yellow disc-shaped flowers. A whole range of Asters have also evolved to bloom late in the season, including New England Aster (*Aster novae-angliae*) which is popular at our nursery this season.

The whole LandHealth team has worked this summer to expand awareness about our nursery, and even in late summer enthusiasm for landscaping with native plants is creating interest in our offerings, especially the fall bloomers. Individuals and small groups are consulting with us on the best ways to use tough, low-maintenance native plants in their gardens. Shoppers at the Weaver's Way Coop grocery store location in Ambler have been taking home our plants in small containers, and that will continue well into the fall. LandHealth is also looking forward to the late summer and fall season when plants set seed. We'll be developing our program of seed propagation in order to get a jump on spring planting. This includes the collection of seeds from our existing stock of plants like columbine (*Aquilegia canadensis*) and hibiscus (*Hibiscus moscheutos*). We'll also be collecting seeds from plants in nearby natural areas, such as jumpseed (*Persicaria virginiana*) so we can offer those super-local plants as alternatives to exotic plants. The crop of common milkweed (*Asclepias syriaca*) growing in our field this summer will also be a seed source for this very popular garden plant.

Because of the COVID-19 health crisis, LandHealth has had to scale back on some of our work with volunteers in the nursery. However, we're adapting to the new reality this fall by continuing our collaboration with Drexel University cooperative education interns. Later in the fall we will be welcoming a few seniors from Belmont Charter High School to the nursery, as part of their career exploration program. We're finding ways to continue to do our work with plants and the land while



columbine (*Aquilegia canadensis*)

maintaining the health of our human partners. Although most of us feel sad to see the days getting a little shorter and the summer coming to a close, autumn life at LandHealth's nursery has plenty to look forward to!



Hibiscus seeds
Photo: Steve Jones



Milkweed seed pod
Photo: Steve Jones

Planned Events (TBD, according to City Guidelines)

AUGUST

28 - Steward-led Community Tour of Cobbs Creek with Phila Water Department

SEPTEMBER

5 - Strawberry Mansion Day with SMCDC

11 - Steward-led Community Tour of Cobbs Creek with Philadelphia Water Department

19 - Delaware River Festival with Partnership for the Delaware Estuary



Golden Eagles Breeding Success at Scottish Highlands Estate

An eagle pair successfully reared the chick at an artificial eyrie on the 10,000-acre Trees for Life Dundreggan estate. This news came as it emerged that a young tagged gold eagle known as Tom has gone missing in ... Read more [here](#).



Weekly Podcast

Wilderness: The Great Elixir

Thursday, August 27
6:30 pm - 7:30 pm

[Sign up Here](#)

Organization Spotlight: Chesapeake Bay Foundation

CBF fights for effective, science-based solutions to the pollution degrading the Chesapeake Bay and its rivers and streams. Their motto, "Save the Bay," is a regional rallying cry for pollution reduction throughout the Chesapeake's six-state, 64,000-square-mile watershed. Find out more [here](#).



Unemployed Line Cooks Are Now Gardening, Thanks to Kitchen Farming Project

What's an out-of-work chef supposed to do to pass the time? Make a garden, according to Dan Barber. The chef-owner of acclaimed restaurant Blue Hill at Stone Barns realized that if his staff couldn't keep busy handling ingredients and preparing meals for guests, because of the coronavirus pandemic, they could at least spend their days learning how to grow food. Read more [here](#).

